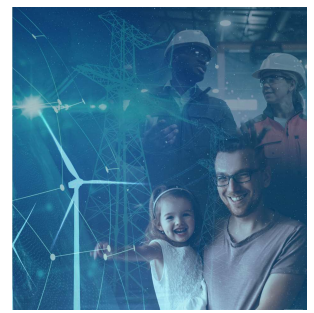




# Energy Storage for Social Equity

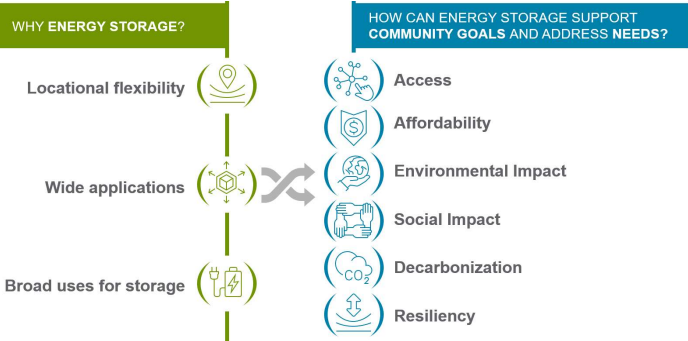
## A distinct new approach for Technical Assistance

Jennifer Yoshimura, Andrew White

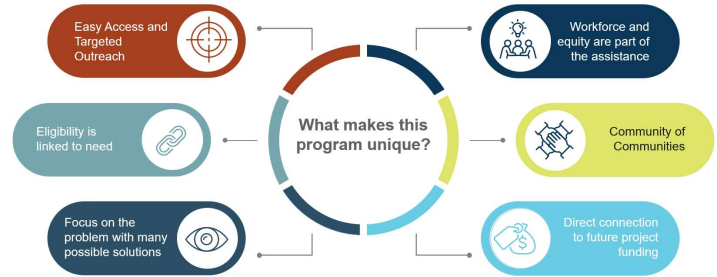


The U.S. Department of Energy's Energy Storage for Social Equity (ES4SE) program was created to offer comprehensive Technical Assistance (TA) tailored to participants' specific energy system challenges. The program centered urban, rural, Tribal, and Indigenous disadvantaged communities to advance their prosperity, well-being, energy independence, and resilience. The ES4SE program has two phases: the first phase, providing personalized TA, led by the Pacific Northwest National Laboratory (PNNL). It was designed to provide communities with energy storage and renewable generation-based solutions, and to empower them with a deeper understanding of their energy system. The TA program focused on the relationship of solutions to socioeconomic conditions, to develop and foster a network of communities helping communities long after the program's conclusion. The second phase, Project Development and Deployment Assistance (PDDA) is led by Sandia National Laboratory.

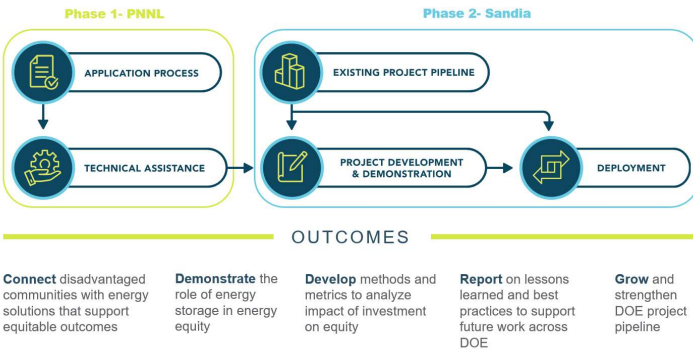
### Supporting community goals and needs through energy storage solutions



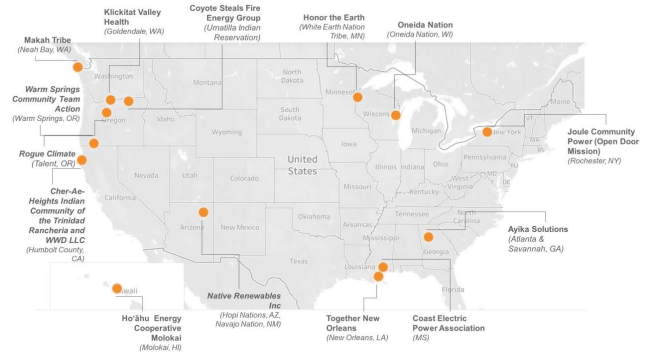
### Key distinctions that enhance Technical Assistance for co-developed community solutions



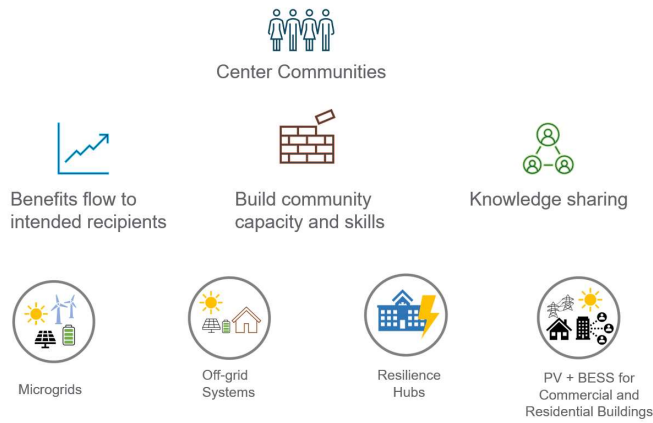
### Linking Technical Assistance with Project Development and Deployment Assistance



### 14 diverse rural, urban, remote, islanded, Tribal, and Indigenous communities



### Centering communities and co-developing technical solutions + equity and workforce



### Scoping lessons learned and preliminary recommendations

Scoping activities	Preliminary recommendations
<ul style="list-style-type: none"> <li>Communicate data (and types) needs.</li> <li>Develop primer resources for communities.</li> <li>Sensitivity for information sharing.</li> <li>Agree upon final deliverables.</li> <li>Program processes, milestones, phases, funding, expectations communicated program-wide and often. Disclose changes in a timely and transparent manner.</li> </ul>	<ul style="list-style-type: none"> <li>Include site visits, where welcome.</li> <li>Utilize project tracking and communication.</li> <li>Use subject matter leads that oversee program to create consistency.</li> <li>Outline data use and distribution plans with communities during scoping (e.g., for memorandums of understanding, non-disclosure agreements, internal review board approval, etc.).</li> </ul>

