

L'Enfant Plaza Metro Station

The Metro is the most convenient means to travel to the SNL office. The L'Enfant Metro Station is a transfer station served by five lines on two levels: Green and Yellow Lines (upper level) and Silver, Blue, and Orange Lines (lower level). Only the Red Line does not serve the station. Please note that the Yellow Line is currently out of service. The L'Enfant Plaza Metro Station has 3 points of egress.

- » When you exit the train, take the L'Enfant Plaza exit. (D Street and Maryland Ave will take you the wrong direction.)
- » From this exit, escalators will bring you to a bay of doors.
- » Use these doors to enter the plaza food court.
- » Follow overhead directional signs through the food court to the "950 South Building."
- » At the end of the hall, you will find a small escalator (see photo below.)
- » Take the escalators up one floor to the lobby where you will see the entrance to the SNL office behind the lobby security desk.
- » You must show your SNL badge to the building security desk officer as you enter.
- » If you have special access needs or questions, contact our offices at 202-314-3027.
- » For your convenience, a full metro map is available on the last page of this guide.

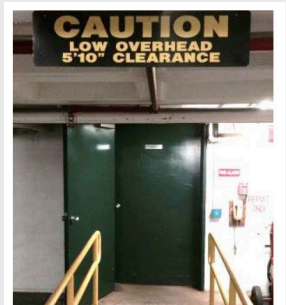
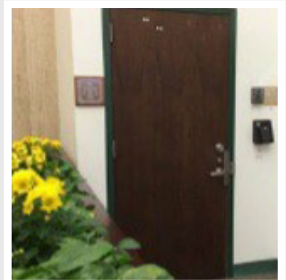
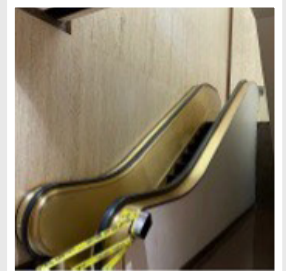
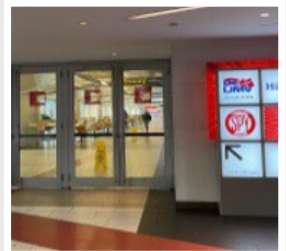
Valet Parking

L'Enfant Plaza offers a valet parking service during the day. It can be found on L'Enfant Plaza Promenade Street immediately across from The Hilton. This street may be accessed from Independence Avenue SW. Signs will direct you to the valet attendant past the security booth.

Public Parking Garage

L'Enfant Plaza's public garage parking entrance is located on Lower 10th Street just below the L'Enfant Plaza Promenade Street running between D Street and Frontage Road, SW. Signs will direct you. When driving from I-395, take the 12th Street exit.

- » Park in the "G2 - A" parking area immediately after you enter the garage.
- » The 950 South Building entrance is a non-descript green door (located near the G2-A parking area), as there are no signs for this building's entrance.
- » Once you enter through the door, take the elevator to the 1st floor and follow the hallway to the front lobby.
- » SNL is located directly behind the lobby security desk.
- » If you are unable to find the green door, any other entrance/elevator will allow you to access the "La Promenade."
- » Follow the directional signs to the 950 South Building.
- » Once you are at the 950 building, take the escalators up one floor to the main lobby.



Washington D.C. Office

Parking Map



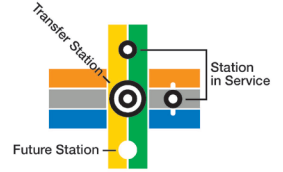
wmata.com
 Information: 202-637-7000 | TTY: 202-962-2033
 Metro Transit Police: 202-962-2121 | Text: MYMTPD (696873)

- Legend**
- **RD** Red Line • Glenmont / Shady Grove
 - **OR** Orange Line • New Carrollton / Vienna
 - **BL** Blue Line • Franconia-Springfield / Downtown Largo
 - **GR** Green Line • Branch Ave / Greenbelt
 - **YL** Yellow Line • Huntington / Greenbelt
 - **SV** Silver Line • Ashburn / Downtown Largo

Station Features

- Parking
- Hospital
- Airport

Connecting Rail Systems



No Smoking



No Eating or Drinking



No Animals (except service animals)



No Audio (without earphones)



No Littering or Spitting



No Dangerous or Flammable Items