



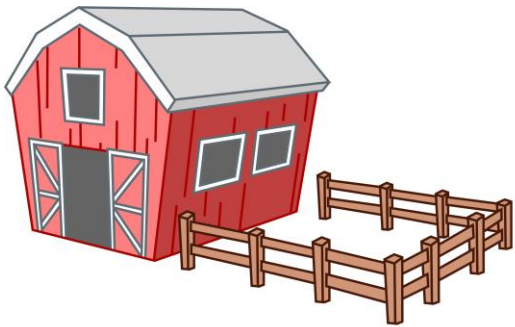
Virtual Kids Day Activity- Bioforensics Why are the Strawberries Making People Sick?

Packet for Participant #5

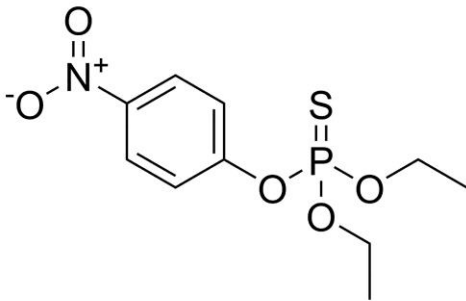


Investigation Card!

Use the information on the following slides and compare to what you learned in the videos and demonstrations to identify which farm your strawberry was from, which bacterium was present, and whether the farm used pesticides. Circle your answers.



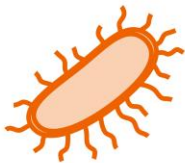
- Farm 1: Olive Oppenheimer's Organic Orchards
 Farm 2: Radioactive Randy's Ripe and Rustic Road-stand
 Farm 3: Sandia Sandy's Scrumptious Strawberries (and Watermelons)



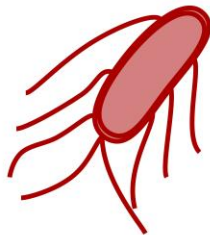
Parathion Present

-or-

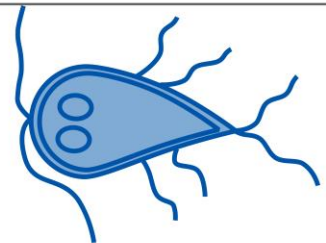
Pesticide-free



E. coli



Salmonella



Giardia



What DNA sequence was in my Strawberry?

Once DNA has been extracted, we can sequence the DNA to get a unique amino acid sequence. Every species of strawberry has a different DNA sequence. What type of strawberry did you extract?

Match your DNA sequence with the type of strawberry!

Your DNA Sequence:

ACCGCC



Oblate

AATTGC



Long Conic

ACCGCC

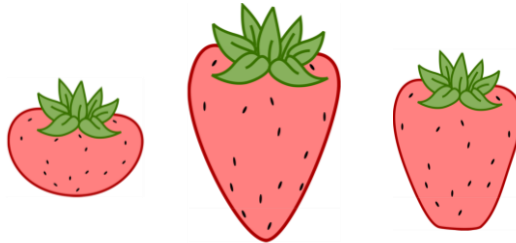


Long Wedge

CCCATTT



Which farm did my strawberry come from?



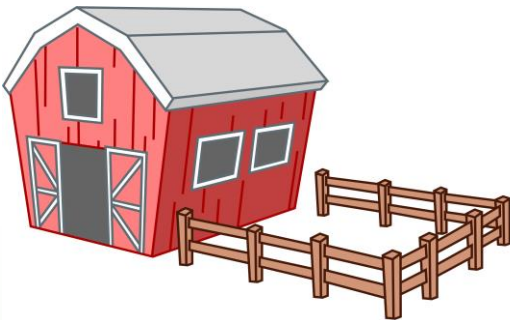
Each farm grows a different type of strawberry:

Olive grows: Oblates

Randy grows: Long Conics

Sandy grows: Long Wedge

Circle the farm the strawberry came from.



Farm 1: Olive Oppenheimer's
Organic Orchards

Farm 2: Radioactive Randy's
Ripe and Rustic Road-stand

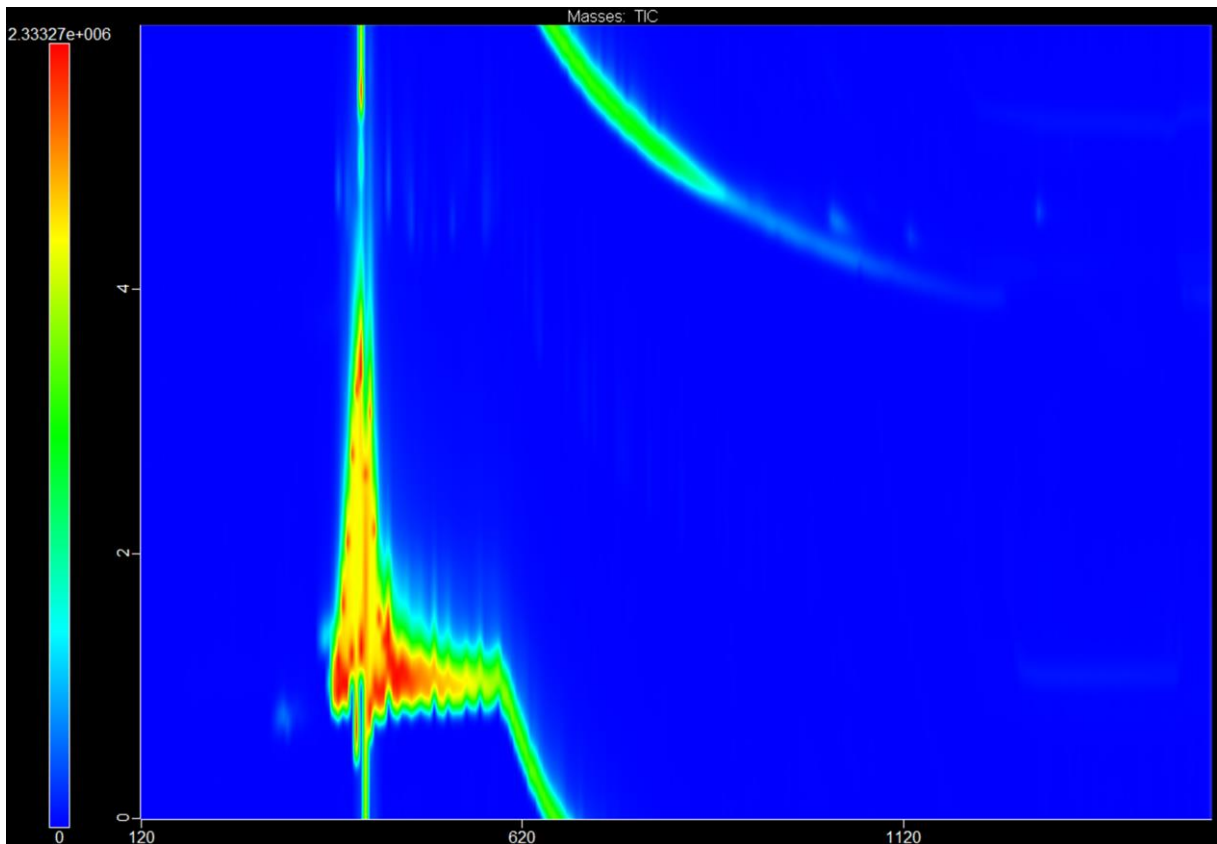
Farm 3: Sandia Sandy's Scrumptious
Strawberries (and Watermelons)



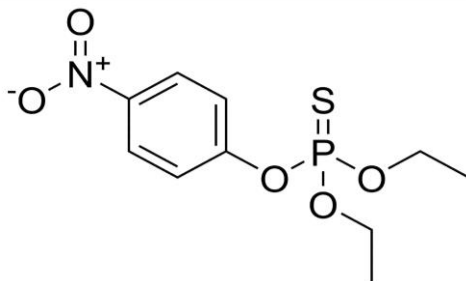
Does your strawberry have pesticides on it?

You completed gas chromatography and you got the following spectrum.

Does your strawberry have pesticides on it?



Circle one.



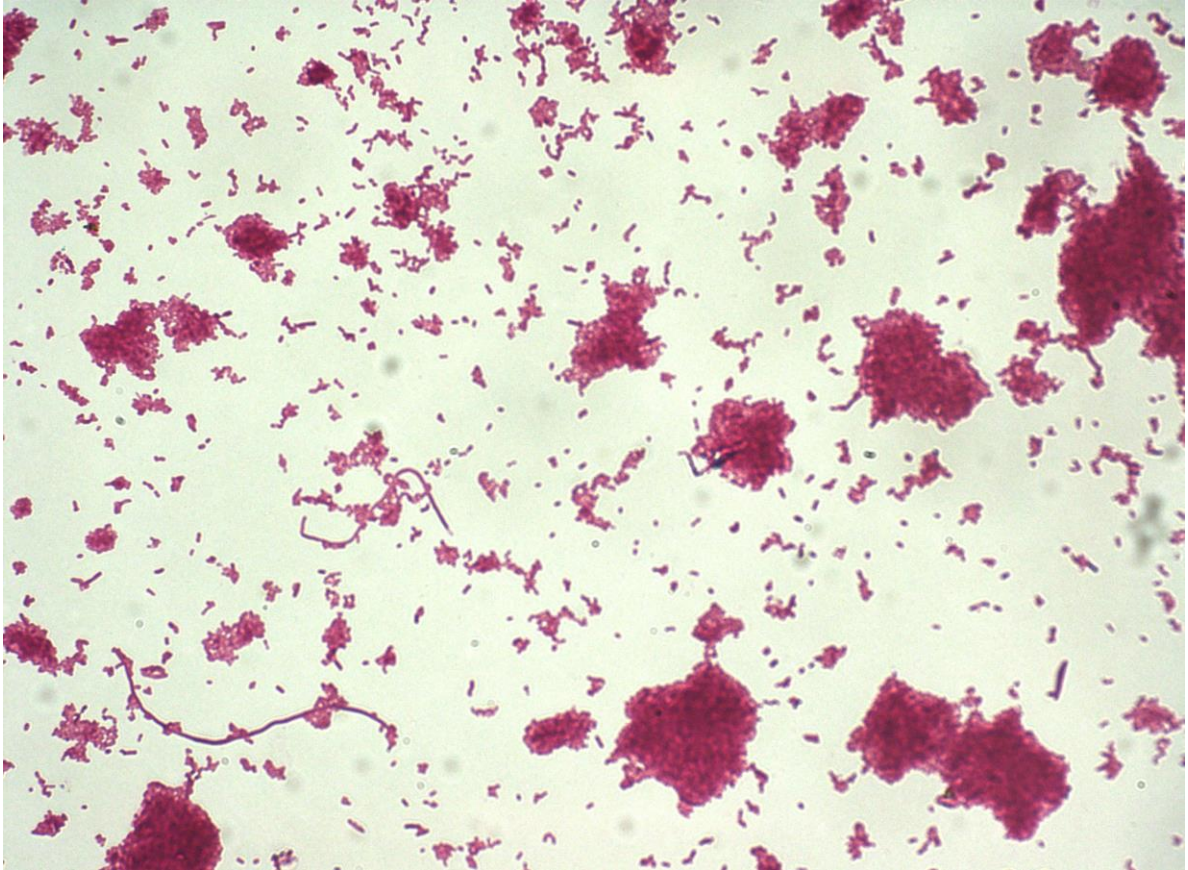
Parathion Present

-or-

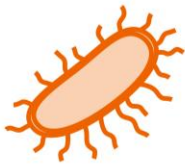
Pesticide-free



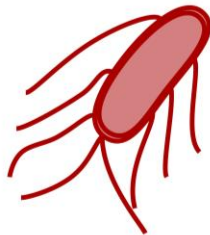
What microbe was on your strawberry?



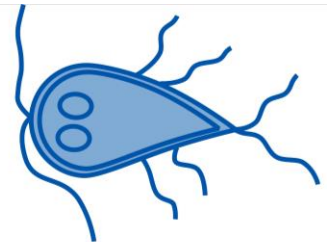
Circle one.



E. coli



Salmonella



Giardia