



Virtual Kids Day Activity

Bioforensics

Why are the Strawberries Making People Sick?

[Watch Video](#)



Virtual Kids Day Activity – Bioforensics

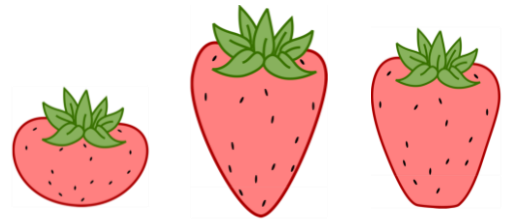
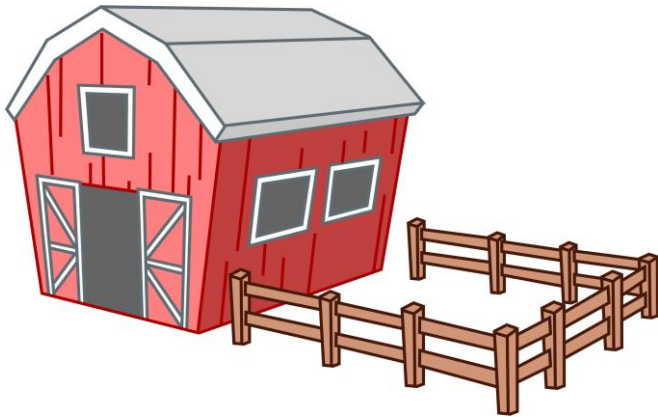
Why are the Strawberries Making People Sick?

There are three strawberry farms in the area:

Farm 1: Olive Oppenheimer’s Organic Orchards

Farm 2: Radioactive Randy’s Ripe and Rustic Road-stand

Farm 3: Sandia Sandy’s Scrumptious Strawberries (and Watermelons)



Each farm grows a different type of strawberry:

Olive grows: Oblates

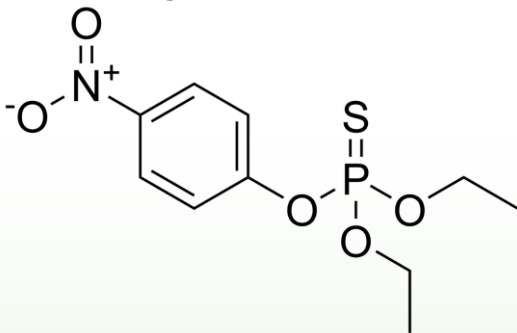
Randy grows: Long Conics

Sandy grows: Long Wedge

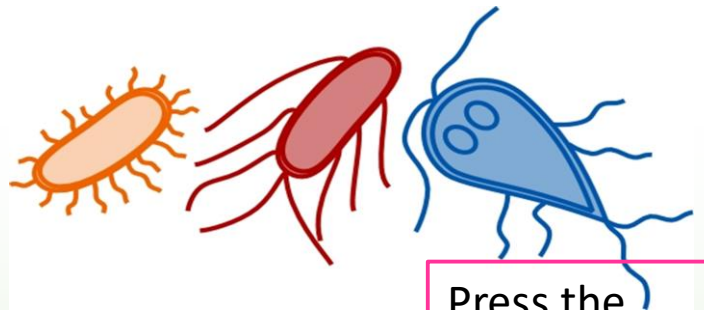
Oh no - People are getting sick from the strawberries !

Put on your lab coat on and goggle and follow the activities DNA extraction and sequencing, microscopy and separation science to find out which strawberries are causing the illness, what microbe is responsible and are these farms telling the truth about their pesticide use?

All the farms say they are organic and pesticide-free, are they?



Which microbe is responsible for the illnesses?



Press the microphone

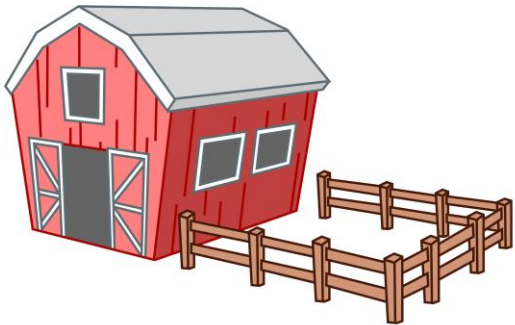




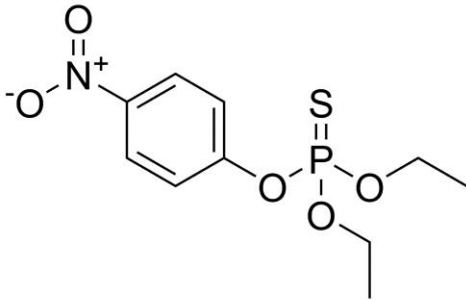
Investigation Card!

Throughout the investigation, keep track of:

- 1) Which farm your strawberry was from?
- 2) Were pesticides used?
- 3) What microbe is on your strawberry?



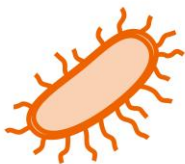
- Farm 1: Olive Oppenheimer's Organic Orchards
- Farm 2: Radioactive Randy's Ripe and Rustic Road-stand
- Farm 3: Sandia Sandy's Scrumptious Strawberries (and Watermelons)



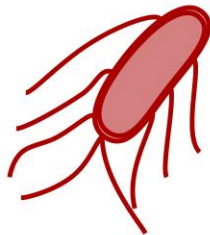
Parathion Present

-or-

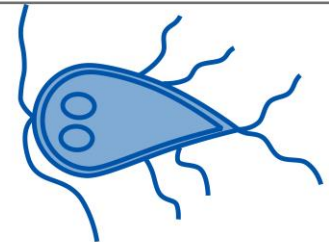
Pesticide-free



E. coli



Salmonella



Giardia

Press the microphone

